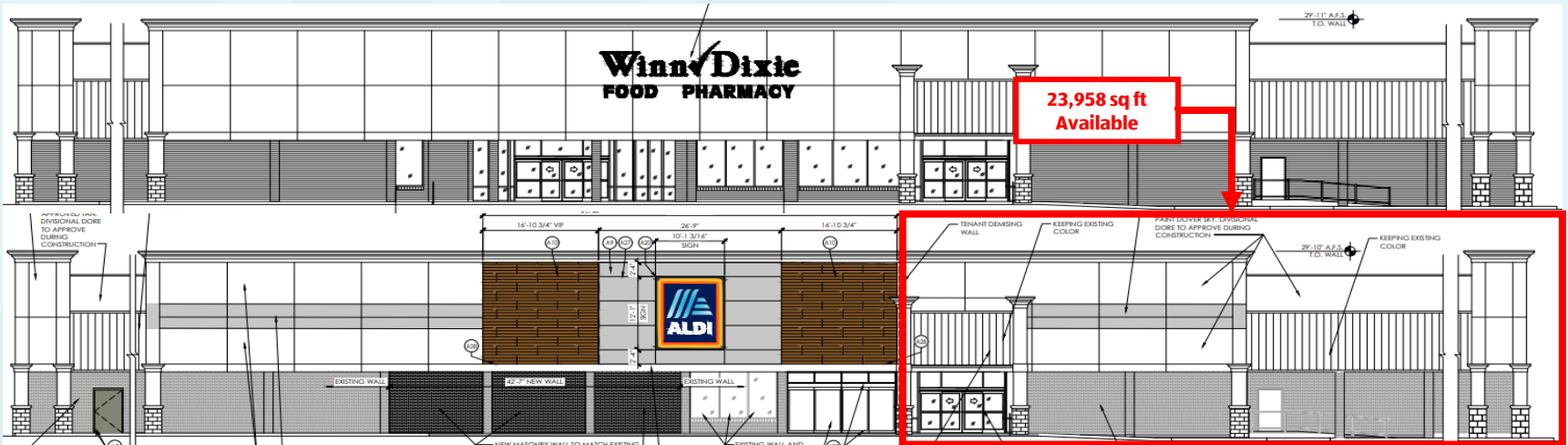


11312 H Hwy 49



Gulfport, MS | ± 23,958 SF AVAILABLE FOR LEASE



11312 H Hwy 49

Conner Verdell

Conner.Verdell@aldi.us

Dan McKinney

Daniel.Mckinney@aldi.us

DEMOGRAPHICS

EST. POPULATION

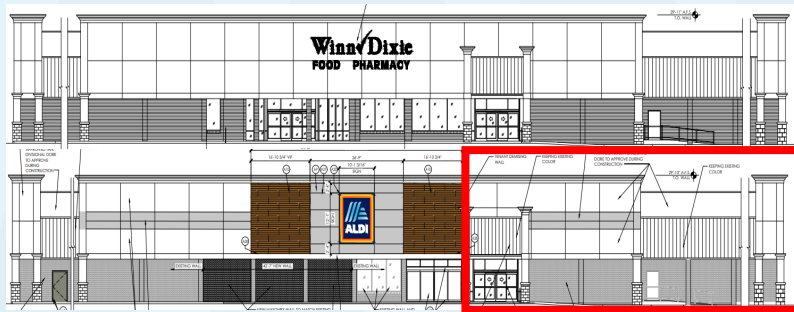
3 mi 33,967 | 5 mi 64,125 | 7 mi 106,477

EST. AVG HH INCOME

3 mi \$65,639 | 5 mi \$67,375 | 7 mi \$65,327

EST. VPD

US 49 N - 44,000 | Dedeaux Rd - 15,000



JOIN THESE AREA TENANTS



- Located adjacent to newly constructed ALDI store in Orange Grove Shopping Center
- Excellent visibility and full access from US 49 N
- Multi-tenant monument sign space available
- 110' of frontage



Gulfport, MS | ± 23,958 SF AVAILABLE FOR LEASE

11312 H Hwy 49

Conner Verdell

Conner.Verdell@aldi.us

Dan McKinney

Daniel.Mckinney@aldi.us



Gulfport, MS | ± 23,958 SF AVAILABLE FOR LEASE

11312 H Hwy 49

Conner Verdell
Conner.Verdell@aldi.us

Dan McKinney
Daniel.Mckinney@aldi.us

AVAILABLE Q2 2025!

