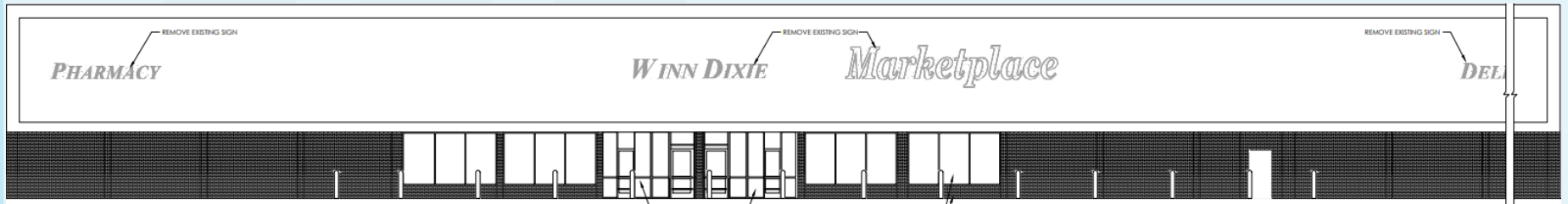


# 10511 D'Iberville Blvd.

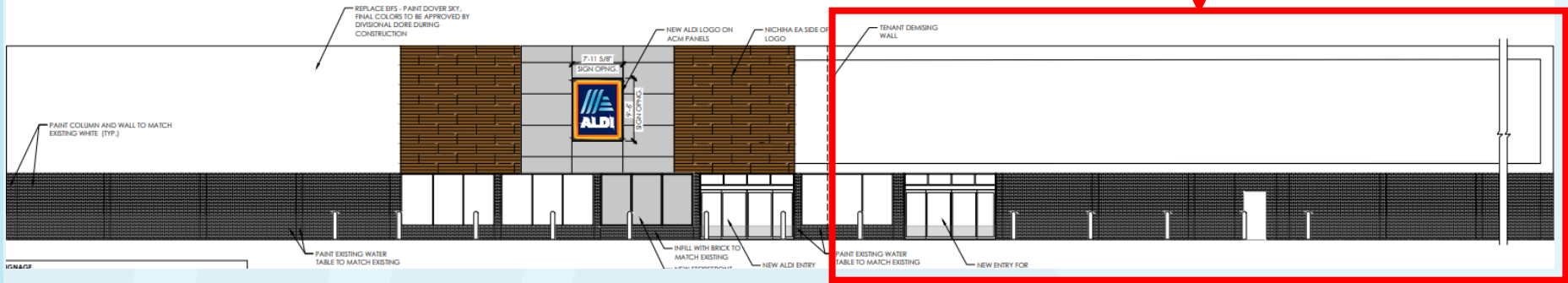


Diberville, MS | ± 23,245 SF AVAILABLE FOR LEASE



2 Existing Front Elevation  
SCALE: 1/8" = 1'-0"

23,245 sq ft Available





# 10511 D'Iberville Blvd.

Conner Verdell

Conner.Verdell@aldi.us

Dan McKinney

Daniel.Mckinney@aldi.us

## DEMOGRAPHICS

### EST. POPULATION

3 mi 34,142 | 5 mi 70,543 | 7 mi 101,952

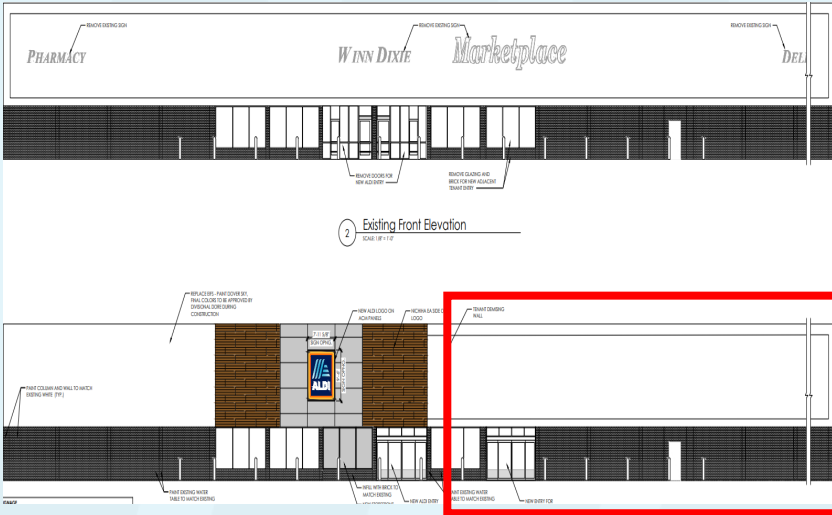
### EST. AVG HH INCOME

3 mi \$66,251 | 5 mi \$69,244 | 7 mi \$71,936

### EST. VPD

I 110 - 41,000 | D'Iberville Blvd - 11,000

## JOIN THESE AREA TENANTS



- Located adjacent to newly constructed ALDI store
- Dock with exterior lift available for tenant
- Well-positioned near major crossroads of I 10 and I 110
- 130' of frontage





Diberville, MS | ± 23,245 SF AVAILABLE FOR LEASE



# 10511 D'Iberville Blvd.

**Conner Verdell**

Conner.Verdell@aldi.us

**Dan McKinney**

Daniel.Mckinney@aldi.us





Diberville, MS | ± 23,245 SF AVAILABLE FOR LEASE



# 10511 D'Iberville Blvd.

**Conner Verdell**  
Conner.Verdell@aldi.us

**Dan McKinney**  
Daniel.Mckinney@aldi.us

**AVAILABLE Q1 2025!**

