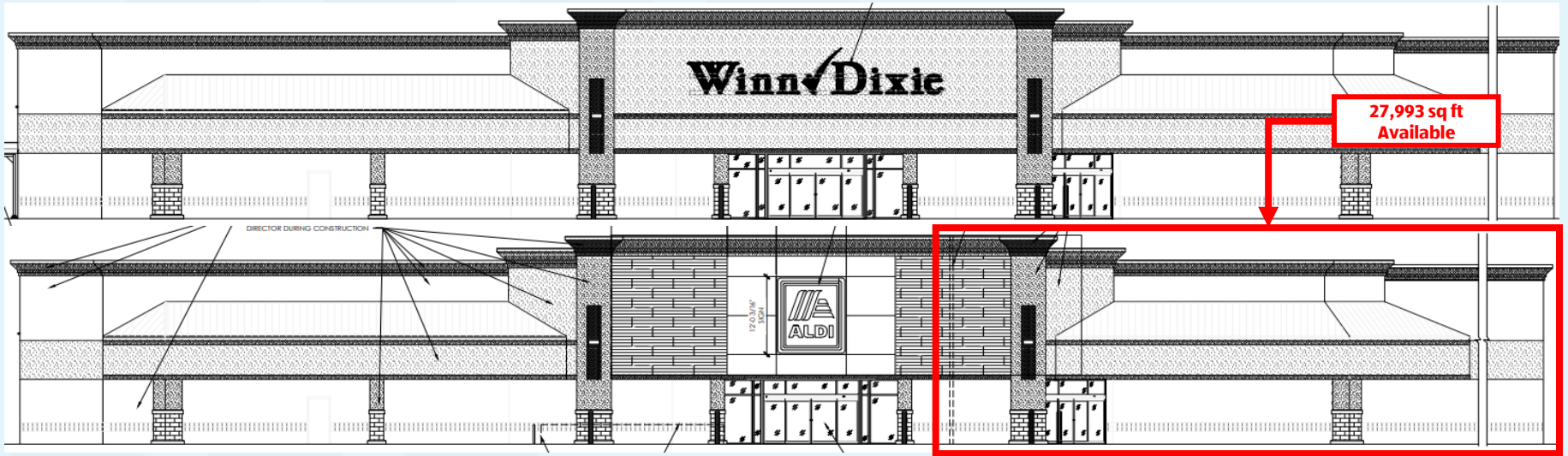


# 17682 Airline Hwy

Prairieville, LA | ± 27,993 SF AVAILABLE FOR LEASE



# 17682 Airline Hwy

**Conner Verdell**

Conner.Verdell@aldi.us

**Dan McKinney**

Daniel.Mckinney@aldi.us

## DEMOGRAPHICS

### EST. POPULATION

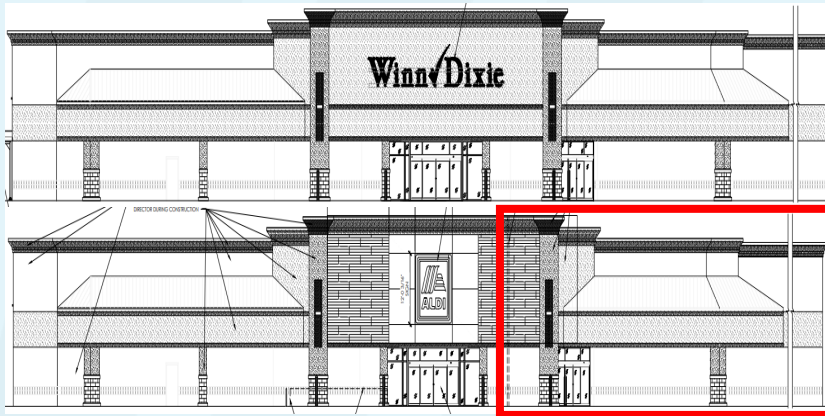
3 mi 32,467 | 5 mi 85,026 | 7 mi 163,231

### EST. AVG HH INCOME

3 mi \$124,121 | 5 mi \$120,591 | 7 mi \$111,726

### EST. VPD

Airline Hwy – 52,497 | Perkins Rd – 7,058



## JOIN THESE AREA TENANTS



Walmart\*



- Located adjacent to newly constructed ALDI store
- Dock access available for new tenant
- 115' of frontage



Prairieville, LA | ± 27,993 SF AVAILABLE FOR LEASE

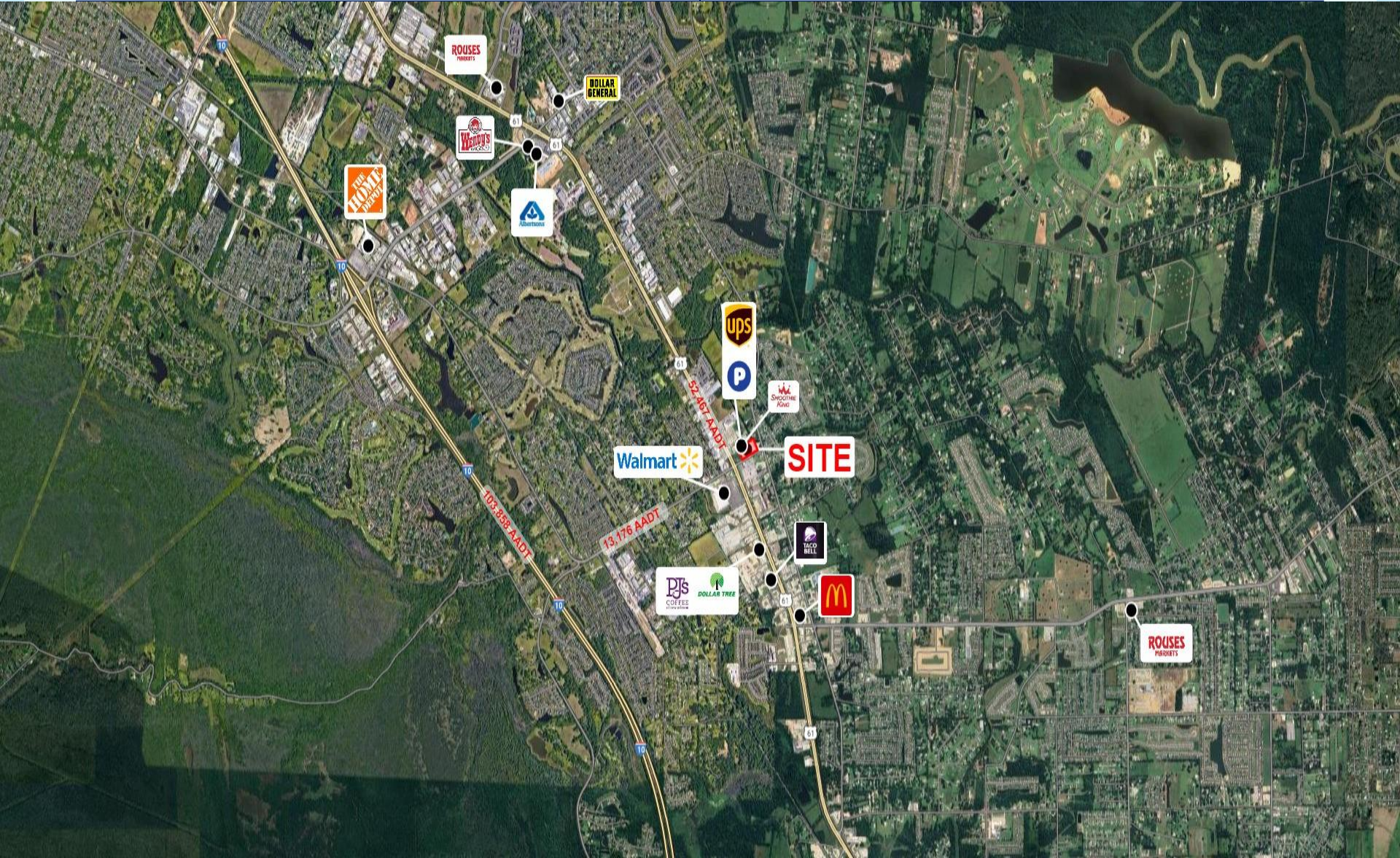
# 17682 Airline Hwy

**Conner Verdell**

Conner.Verdell@aldi.us

**Dan McKinney**

Daniel.Mckinney@aldi.us





Prairieville, LA | ± 27,993 SF AVAILABLE FOR LEASE

**17682 Airline Hwy**

**Conner Verdell**

Conner.Verdell@aldi.us

**Dan McKinney**

Daniel.Mckinney@aldi.us

**AVAILABLE Q2 2025!**

