

915 Shotwell Street

Bainbridge, GA | ± 26,900 SF AVAILABLE FOR LEASE



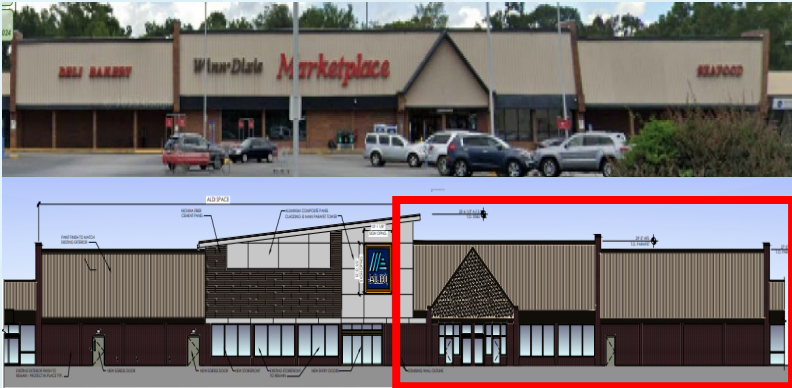
915 Shotwell Street

Conner Verdell

Conner.Verdell@aldi.us

Dan McKinney

Daniel.Mckinney@aldi.us



DEMOGRAPHICS

EST. POPULATION

3 mi 15,883 | 5 mi 18,998 | 7 mi 21,576

EST. AVG HH INCOME

3 mi \$58,432 | 5 mi \$58,344 | 7 mi \$58,744

EST. VPD

E Shotwell St - 11,400 | S Larmer St - 1,000

JOIN THESE AREA TENANTS



- Located adjacent to newly constructed ALDI store in Market Square
- Multi-tenant monument sign space available
- 140' of frontage

Bainbridge, GA | ± 26,900 SF AVAILABLE FOR LEASE

915 Shotwell Street

Conner Verdell
Conner.Verdell@aldi.us

Dan McKinney
Daniel.Mckinney@aldi.us



Bainbridge, GA | ± 26,900 SF AVAILABLE FOR LEASE

915 Shotwell Street

Conner Verdell
Conner.Verdell@aldi.us

Dan McKinney
Daniel.Mckinney@aldi.us

AVAILABLE Q2 2025!

