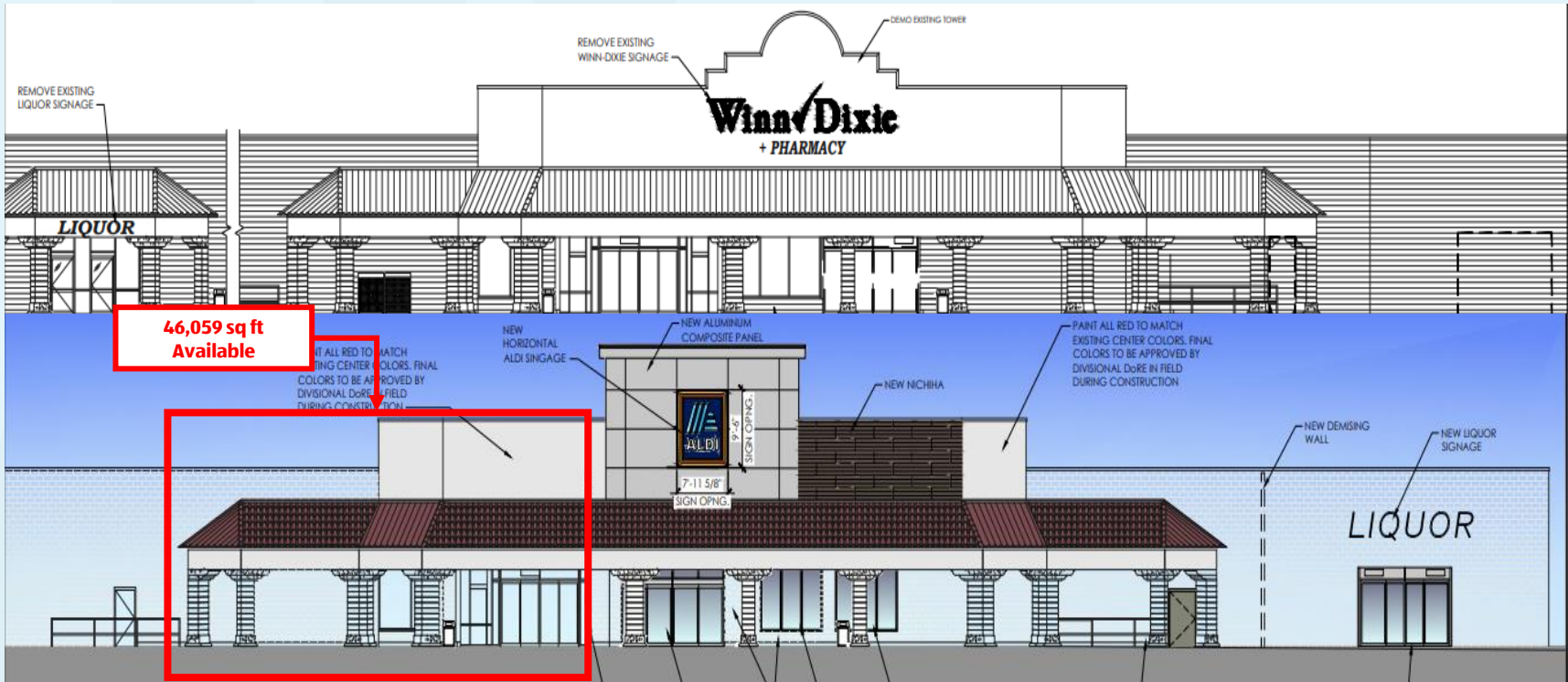


# 353 West Granada Blvd



Ormond Beach, FL | ± 46,059 SF AVAILABLE FOR LEASE



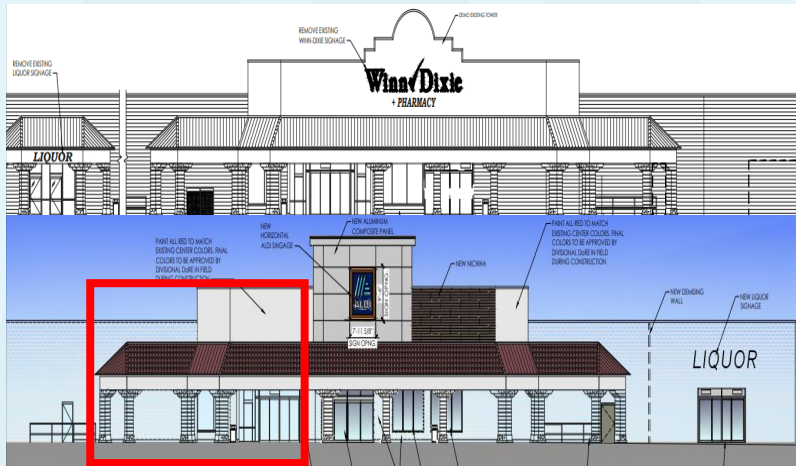
# 353 West Granada Blvd

**Conner Verdell**

Conner.Verdell@aldi.us

**Dan McKinney**

Daniel.Mckinney@aldi.us



## DEMOGRAPHICS

### EST. POPULATION

3 mi 51,422 | 5 mi 98,909 | 7 mi 137,315

### EST. AVG HH INCOME

3 mi \$69,127 | 5 mi \$71,734 | 7 mi \$69,940

### EST. VPD

W Granada Blvd – 31,500 | - N Orchard St – 3,400

## JOIN THESE AREA TENANTS



- Located adjacent to newly constructed ALDI store
- Excellent visibility from W Granada Blvd (31,500 AADT)
- Dock with exterior lift available
- 190' of frontage





Ormond Beach, FL | ± 46,059 SF AVAILABLE FOR LEASE

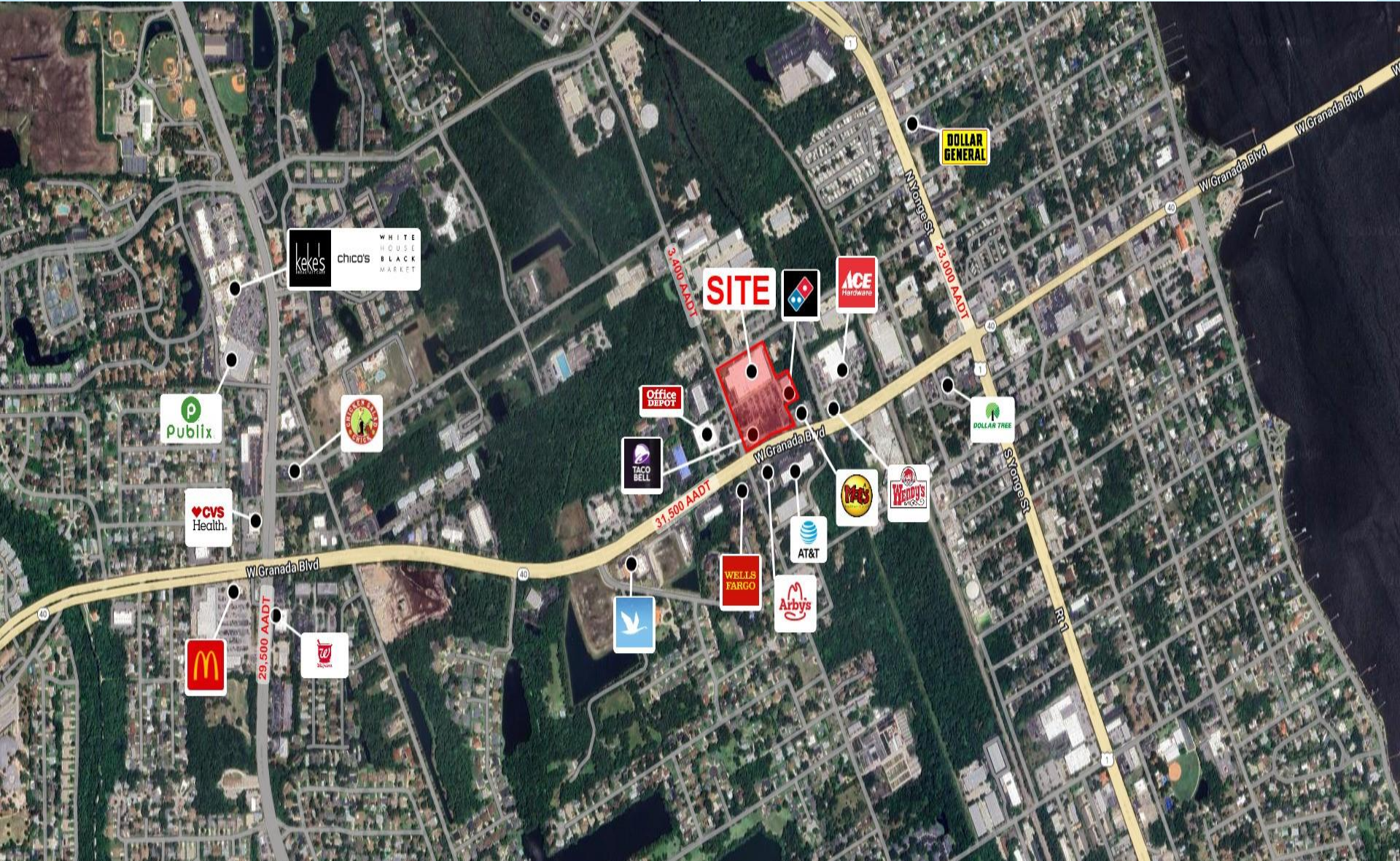
# 353 West Granada Blvd

**Conner Verdell**

Conner.Verdell@aldi.us

**Dan McKinney**

Daniel.Mckinney@aldi.us





Ormond Beach, FL | ± 46,059 SF AVAILABLE FOR LEASE

# 353 West Granada Blvd

**Conner Verdell**

Conner.Verdell@aldi.us

**Dan McKinney**

Daniel.Mckinney@aldi.us

**AVAILABLE Q2 2025!**

