

Space Available Here  
Approx. 20,000 SF

FOR LEASE

# BUCKHEAD PAVILION

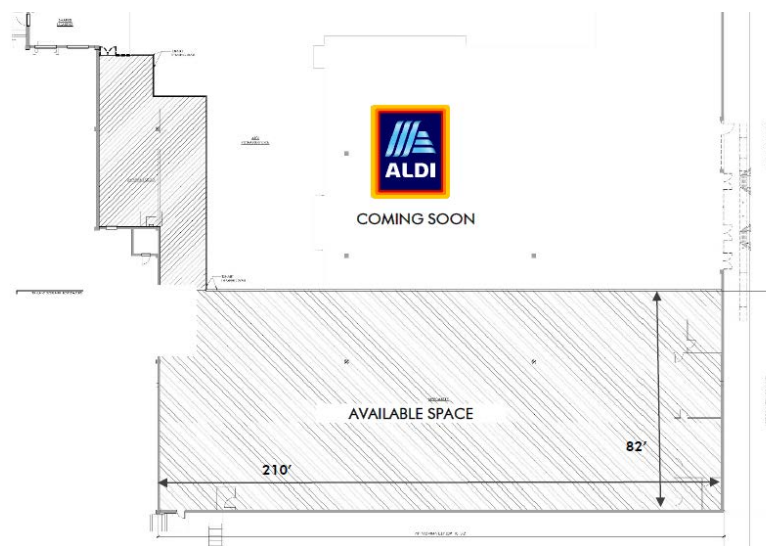
3221 PEACHTREE ROAD • ATLANTA, GA 30305

**CBRE**



# PROPERTY INFO

- Multiple access points to property with easy access to multiple traffic lights
- Approximately 19,820 square feet available
- 100,000 square feet well established shopping center shared with CVS, PetSmart and future ALDI
- Ample Parking throughout the development with more than 400 surface parking spaces
- Excellent traffic count- 39,000 ADT on Peachtree Road
- Secure loading dock
- Quality retail surround site
- Heavy daytime population



TENANT SQUARE FOOTAGES		
AREAS	ALDI SPACE	ADJACENT SPACE
MARKETPLACE	14,400 SF	18,864 SF
STORAGE/STOCK	4,854 SF	2,427 SF
LOADING (SHARED)	321 SF	321 SF
TOTAL	21,575 SF	19,820 SF

# RENDERINGS

Electronics Store



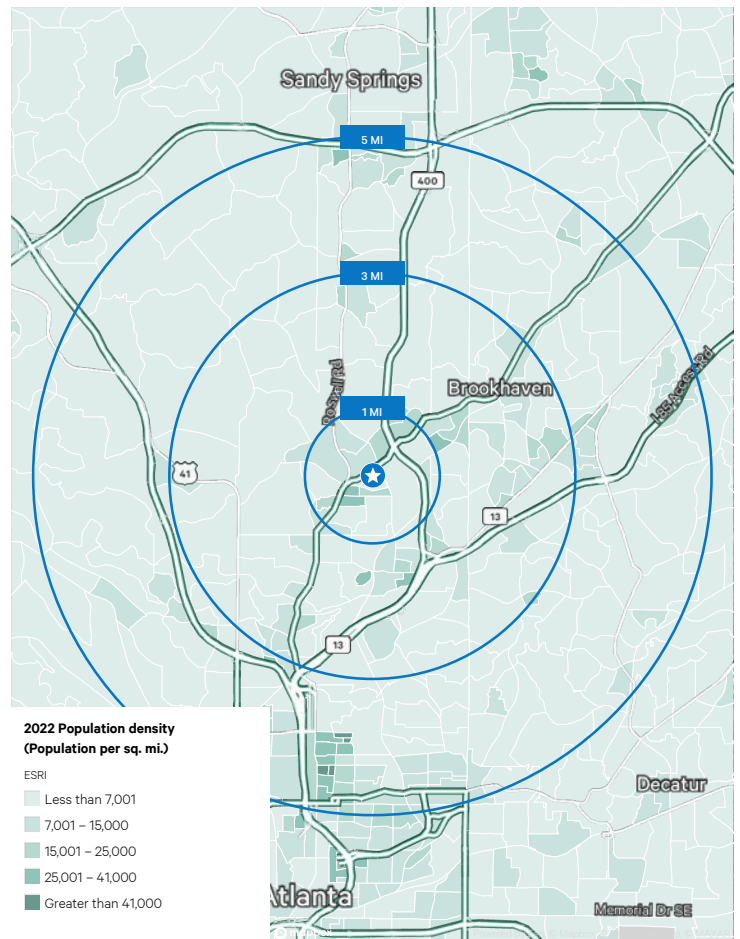
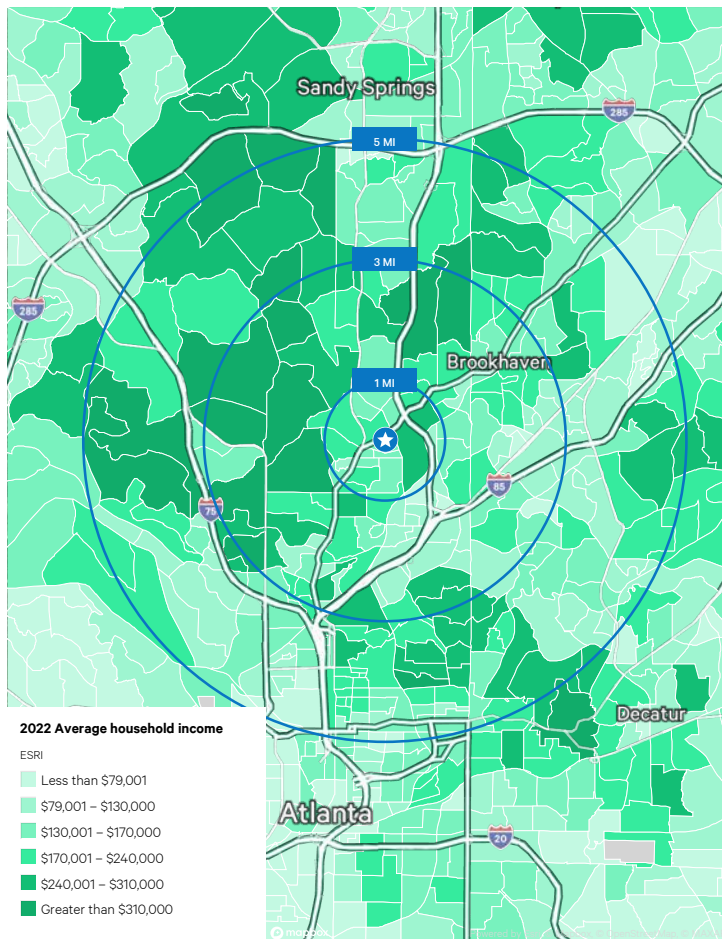
Retail Store





# PROPERTY INFO

- Multiple access points to property with easy access to multiple traffic lights
- Approximately 19,820 square feet available
- 100,000 square feet well established shopping center shared with CVS, PetSmart and future ALDI
- Ample Parking throughout the development with more than 400 surface parking spaces
- Excellent traffic count- 39,000 ADT on Peachtree Road
- Secure loading dock
- Quality retail surround site
- Heavy daytime population





# BUCKHEAD PAVILION





**FOR LEASE**

# BUCKHEAD PAVILION

3221 PEACHTREE STREET • ATLANTA, GA 30305

## CONTACT US

**KIRK L. BUTTLE**

Senior Vice President  
+1 404 923 1244  
[kirk.buttle@cbre.com](mailto:kirk.buttle@cbre.com)

**CBRE, INC**

+1 404 504 7900  
3550 Lenox Road NE  
Suite 2300  
Atlanta, GA 30326  
[www.cbre.com/atlanta](http://www.cbre.com/atlanta)

# CBRE

© 2023 CBRE, Inc. All rights reserved. This information has been obtained from sources believed reliable, but has not been verified for accuracy or completeness. You should conduct a careful, independent investigation of the property and verify all information. Any reliance on this information is solely at your own risk. CBRE and the CBRE logo are service marks of CBRE, Inc. All other marks displayed on this document are the property of their respective owners, and the use of such logos does not imply any affiliation with or endorsement of CBRE. Photos herein are the property of their respective owners. Use of these images without the express written consent of the owner is prohibited.