



Marlton, NJ

# 230 N. MAPLE AVENUE

29,000 SF End Cap for Sublease

For more info, please contact:

**SCOTT WEISS**

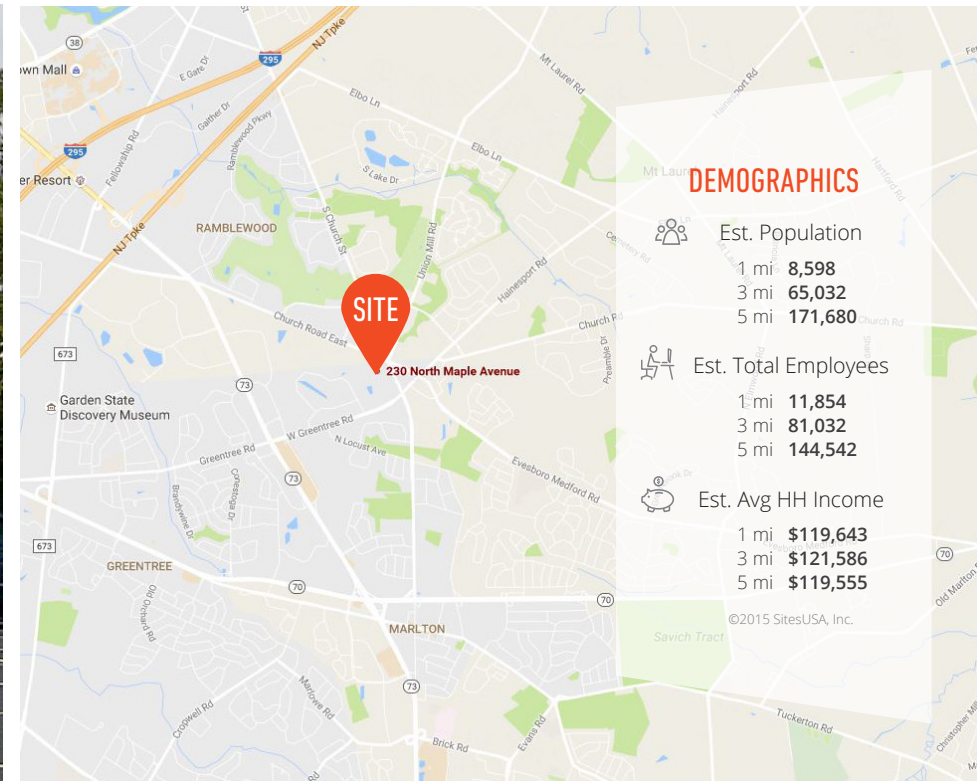
sweiss@MSCretail.com  
215.568.2600 x730

**JASON BOCK**

jbock@MSCretail.com  
215.568.2600 x721

**MICHAEL SALOVE**

msalove@MSCretail.com  
215.568.2600 x717



## PROPERTY DETAILS

- ▶ Well positioned in Crispin Square Shopping Center in the heart of the Marlton retail market
- ▶ End cap opportunity with pylon space, ample parking and strong co-tenancy in the area
- ▶ Nearby access from the shopping center to the NJ Turnpike (62,000 AADT)
- ▶ Population over 171,000 with Household incomes over \$119,000 and over 144,000 employees all within 5 miles
- ▶ Two 1,500 SF storefronts already demised and included in 29,000 SF space that can be leased with the space or separately

## JOIN THESE AREA RETAILERS







Marlton, NJ

# 230 N. MAPLE AVENUE

## Site Plan

For more info, please contact:

**SCOTT WEISS**

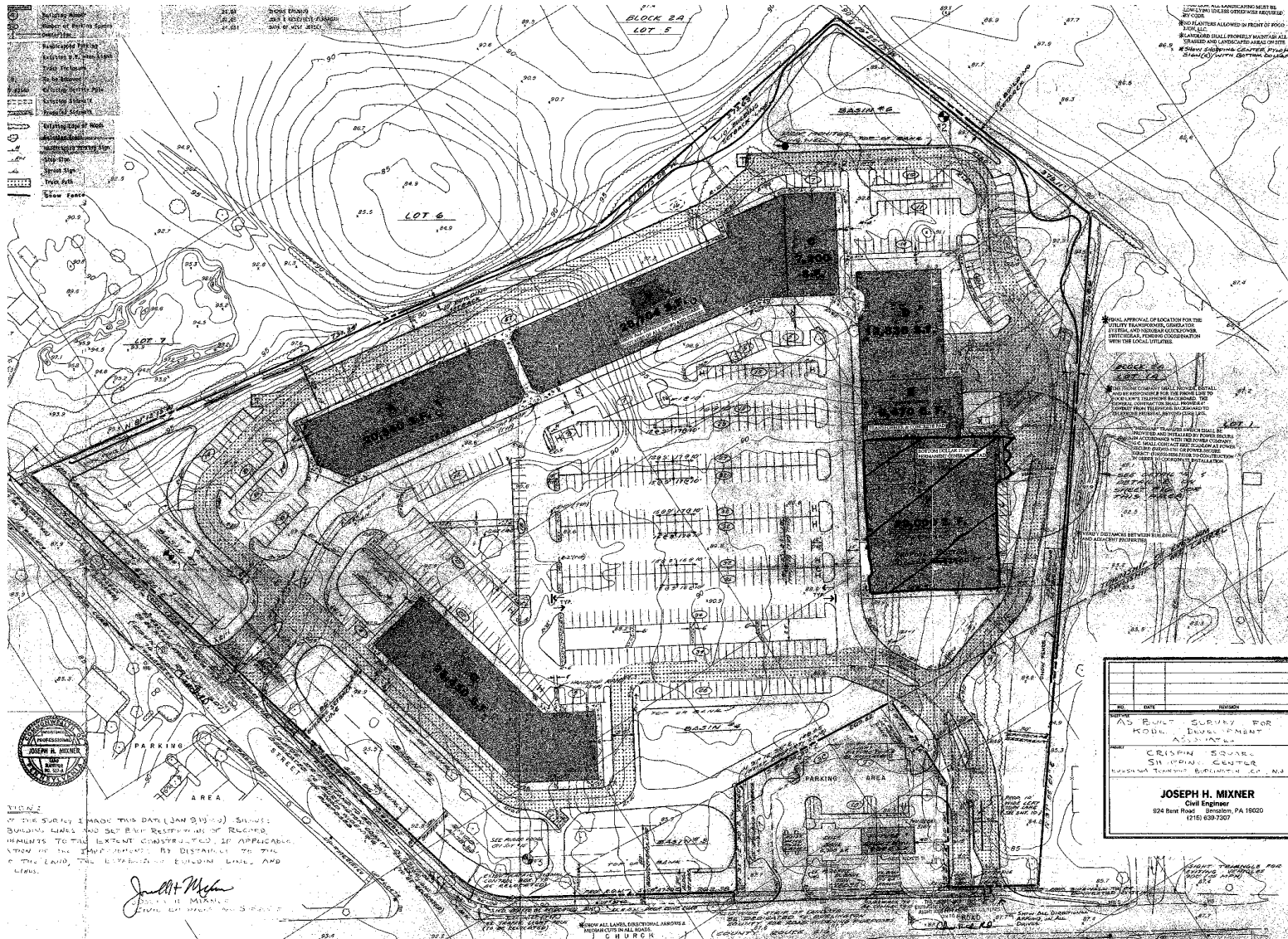
sweiss@MSCretail.com  
215.568.2600 x730

**JASON BOCK**

jbock@MSCretail.com  
215.568.2600 x721

**MICHAEL SALOVE**

msalove@MSCretail.com  
215.568.2600 x717



# 230 N. MAPLE AVENUE

## Floor Plan

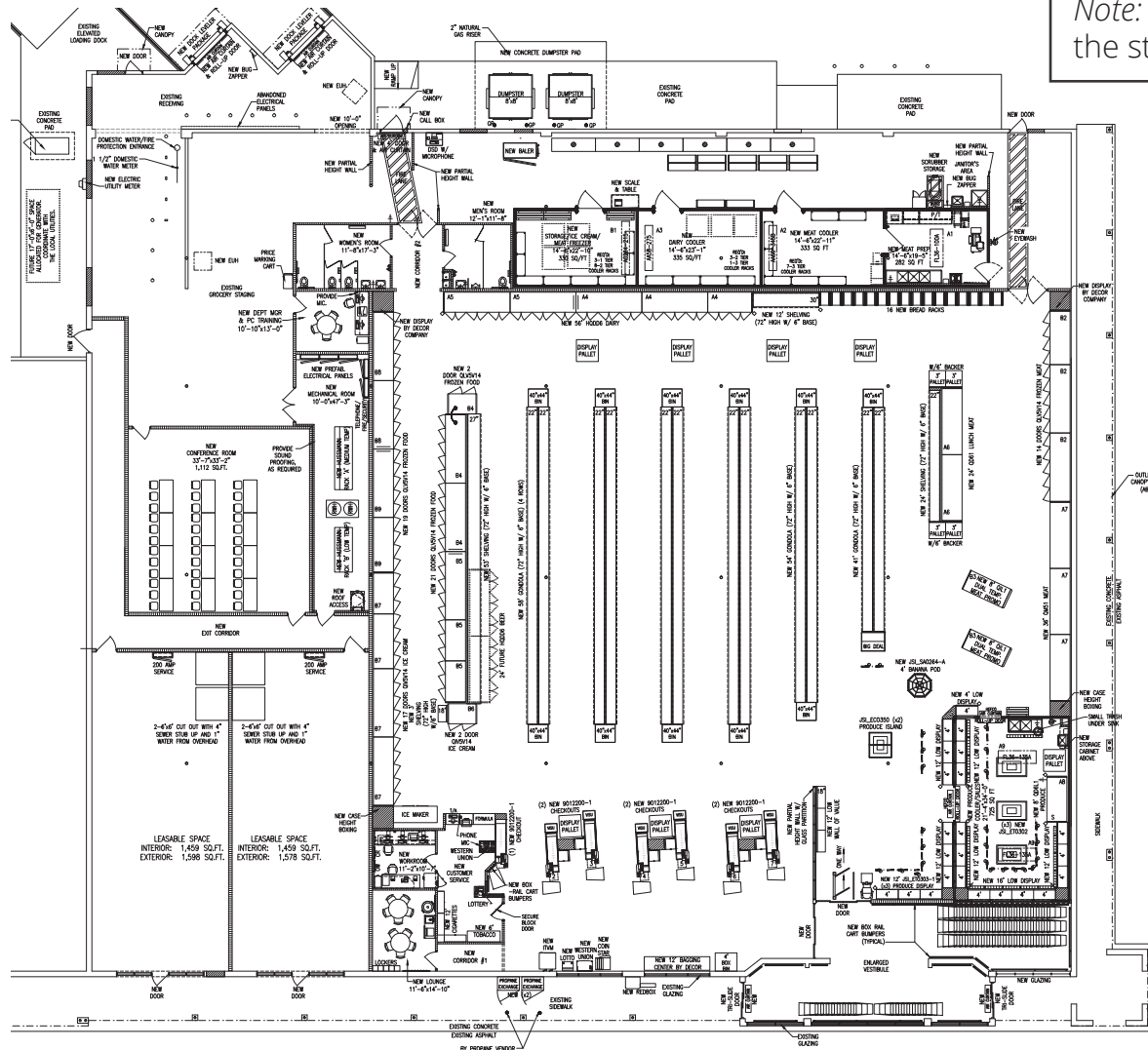
For more info, please contact:

**SCOTT WEISS**  
sweiss@MSCretail.com  
215.568.2600 x730

**JASON BOCK**  
jbock@MSCretail.com  
215.568.2600 x721

**MICHAEL SALOVE**  
msalove@MSCretail.com  
215.568.2600 x717

Note: All equipment within the store has been removed







Marlton, NJ

# 230 N. MAPLE AVENUE

Aerial

For more info, please contact:

**SCOTT WEISS**

sweiss@MSCretail.com  
215.568.2600 x730

**JASON BOCK**

jbock@MSCretail.com  
215.568.2600 x721

**MICHAEL SALOVE**

msalove@MSCretail.com  
215.568.2600 x717

