

RETAIL FOR LEASE
**SUNMARK
PLAZA**

611 - 941 Marks St.
Henderson, NV 89014



LOGIC



JASON OTTER

Founding Partner
702.954.4109
jotter@logicCRE.com
S.0168161.LLC

BART DEBUONO

Senior Associate
702.954.4129
bdebuono@logicCRE.com
S.0176508.LLC

COOPER POWELL

Senior Associate
702.954.4154
cpowell@logicCRE.com
BS.0145955.LLC

MADLINE NUHA

Associate
702.954.4131
mnuha@logicCRE.com
BS.0146665

ELENA OTTER

Client Relations Representative
702.604.3388
eotter@logicCRE.com

611 - 941 Marks St.
Henderson, NV 89014



Property Highlights

- Galleria Sunset Power Center trade area
- Adjacent to Costco Wholesale and the Galleria Mall with access to the US-95 Freeway (Sunset and Galleria off ramps)
- Prominent tenants include Best Buy, Aldi (under construction), Petco, Jo-Ann Fabrics, Sportsman's Warehouse, Starbucks, and other national tenants
- Nearby combined traffic counts per day in excess of 140,000 CPD
- Close to new Cadence master-planned community, Union Village Medical Campus, and the Valley Auto Mall

Listing Snapshot



\$1.50 PSF NNN
Lease Rate



+/- 6,498 SF
Available Square Feet



Galleria/Henderson
Submarket

Demographics

Population	1-mile	3-mile	5-mile
2023 Population	11,299	136,882	316,247
Income	1-mile	3-mile	5-mile
2023 Average Household Income	\$93,746	\$91,971	\$96,454
Households	1-mile	3-mile	5-mile
2023 Total Households	4,274	55,004	125,348

LOGIC



The information herein was obtained from sources deemed reliable; however Logic Commercial Real Estate makes no guarantees, warranties or representation as to the completeness or accuracy thereof.

Nearby Retail

■ Subject
 ■ Retail
 ■ Hotels / Casinos
 ■ Hospitals
 ■ Master-Planned Community



LOGIC in

The information herein was obtained from sources deemed reliable; however Logic Commercial Real Estate makes no guarantees, warranties or representation as to the completeness or accuracy thereof.

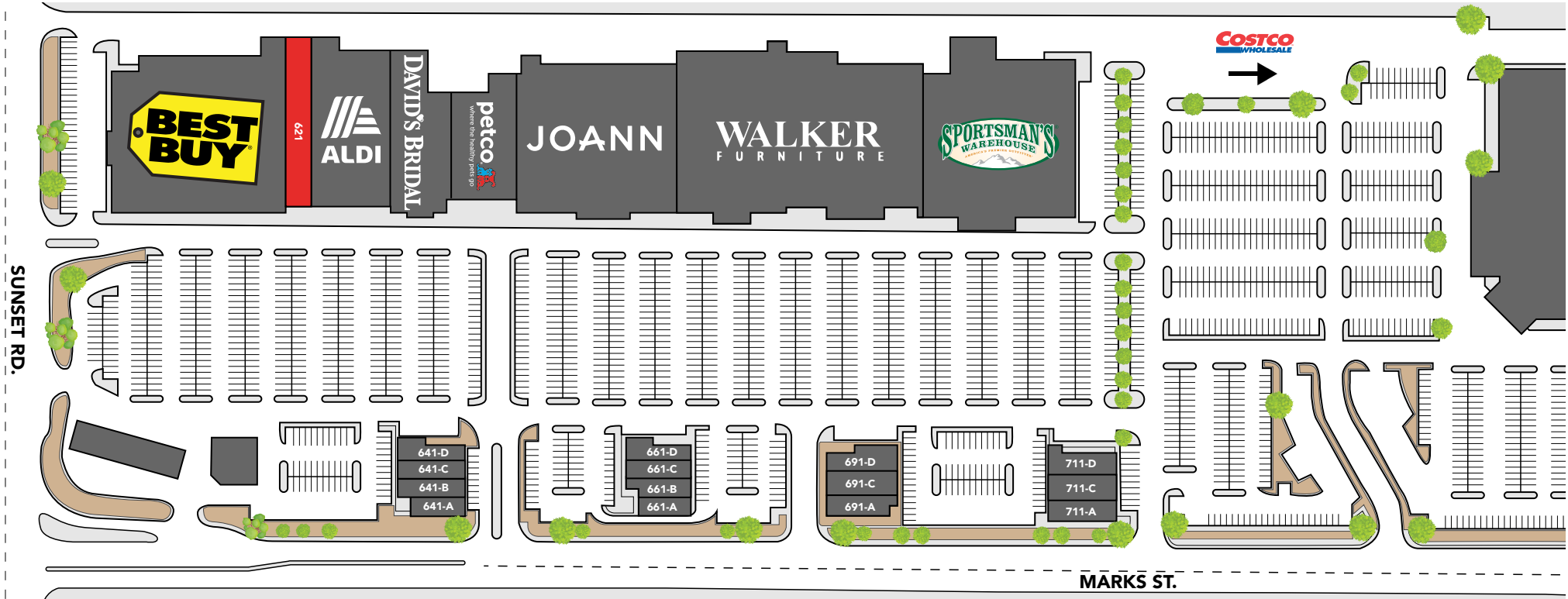
Close Up Aerial



LOGIC in

The information herein was obtained from sources deemed reliable; however Logic Commercial Real Estate makes no guarantees, warranties or representation as to the completeness or accuracy thereof.

Site Plan



SUITE	TENANT	SF
601	CHEVRON	3,298
611	BEST BUY	46,349
621	SUBLEASE	6,498
621	ALDI	29,990
631-CB	DAVID'S BRIDAL	12,250
631-C	PETCO	12,609
651	JO-ANN FABRICS	42,000
671-681	WALKER FURNITURE	65,569
701	SPORTSMAN'S WAREHOUSE	42,000

SUITE	TENANT	SF
641-A	WINGSTOP	3,520
641-B	TONY'S MEXICAN	1,520
641-C	SHARKEY'S CUTS FOR KIDS	1,300
641-D	PANDA EXPRESS	2,240
661-A	STARBUCKS	1,500
661-B	EUROPEAN WAX CENTER	1,520
661-C	ONEMAIN FINANCIAL	1,150
661-D	GREAT HARVEST BREAD CO.	2,731

SUITE	TENANT	SF
691-A	JAZZ NAIL SALON	3,000
691-C	JERSEY MIKE'S	1,100
691-D	ORANGE THEORY	2,800
711-A	MASSAGE ENVY	3,444
711-C	WOWWOW LEMONADE	1,444
711-D	DOMINO'S	2,000

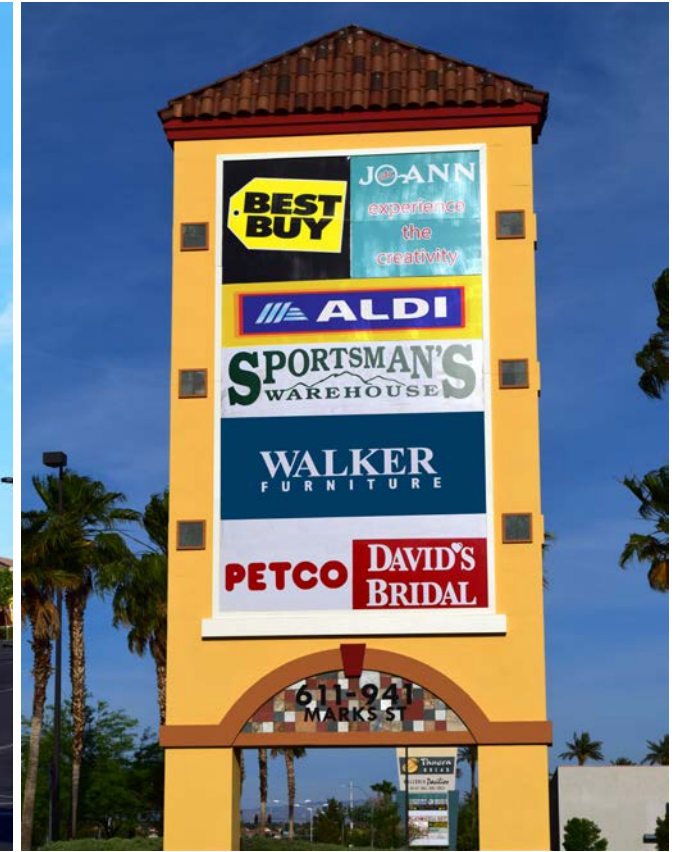
Future Elevation



LOGIC in

The information herein was obtained from sources deemed reliable; however Logic Commercial Real Estate makes no guarantees, warranties or representation as to the completeness or accuracy thereof.

Property Photos



LOGIC in

The information herein was obtained from sources deemed reliable; however Logic Commercial Real Estate makes no guarantees, warranties or representation as to the completeness or accuracy thereof.