

AVAILABLE FOR SALE

1.57 ACRE OUTLOT AVAILABLE

N. WESTWOOD BLVD, POPLAR BLUFF, MO

RETAIL



CONTACT US

Paul Fusz

First Vice President
+1 314 655 6046
paul.fusz@cbre.com

Nick Garavaglia

Senior Associate
+1 314 655 5827
nick.garavaglia@cbre.com

CBRE

190 Carondelet Plaza
+1 314 655 6000
www.cbre.com/stlouis

www.cbre.com/stlouis

CBRE

AVAILABLE FOR SALE

1.57 ACRE OUTLOT AVAILABLE

N. WESTWOOD BLVD, POPLAR BLUFF, MO

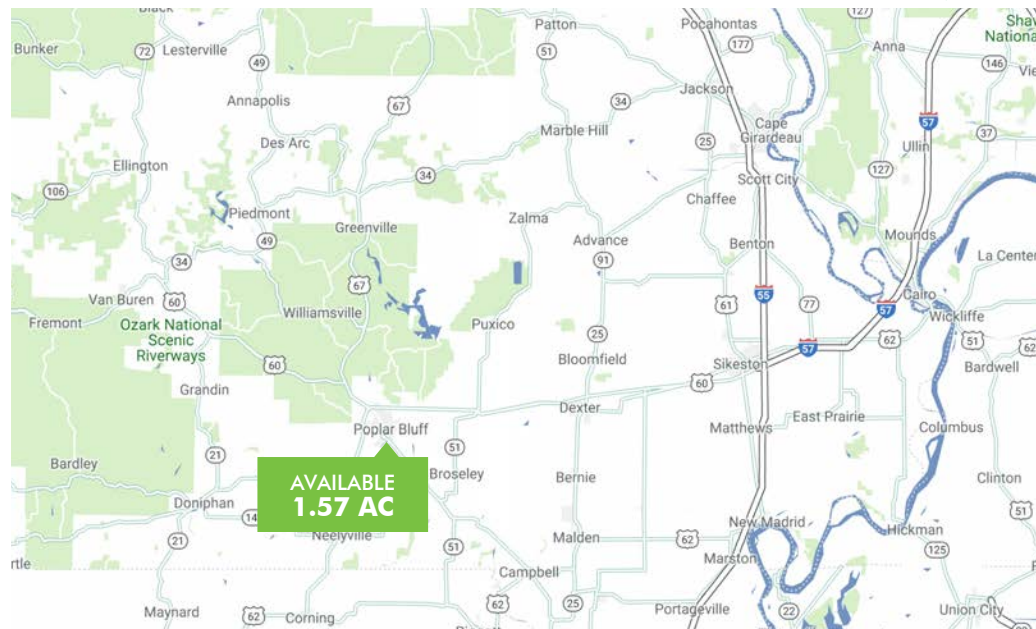
RETAIL



PROPERTY INFO

- + 1.57 AC outlot of ALDI grocery store
- + Located in the heart off the main retail corridor in Poplar Bluff and across from Poplar Bluff Junior High
- + Anchored by Hobby Lobby, Marshalls, Petco, Dollar Tree, Dunhams and Ulta Beauty
- + Additional retailers near the intersection include Dollar Tree, Orschlen Farm & Home and O'Reilly Auto Parts
- + Poplar Bluff is the county seat of Butler County and sits at the crossroads of US Route 60 & US Route 67
- + The City is the medical, commercial and retail hub for the surrounding 8 counties

SALE PRICE: \$240,000



AREA DEMOGRAPHICS

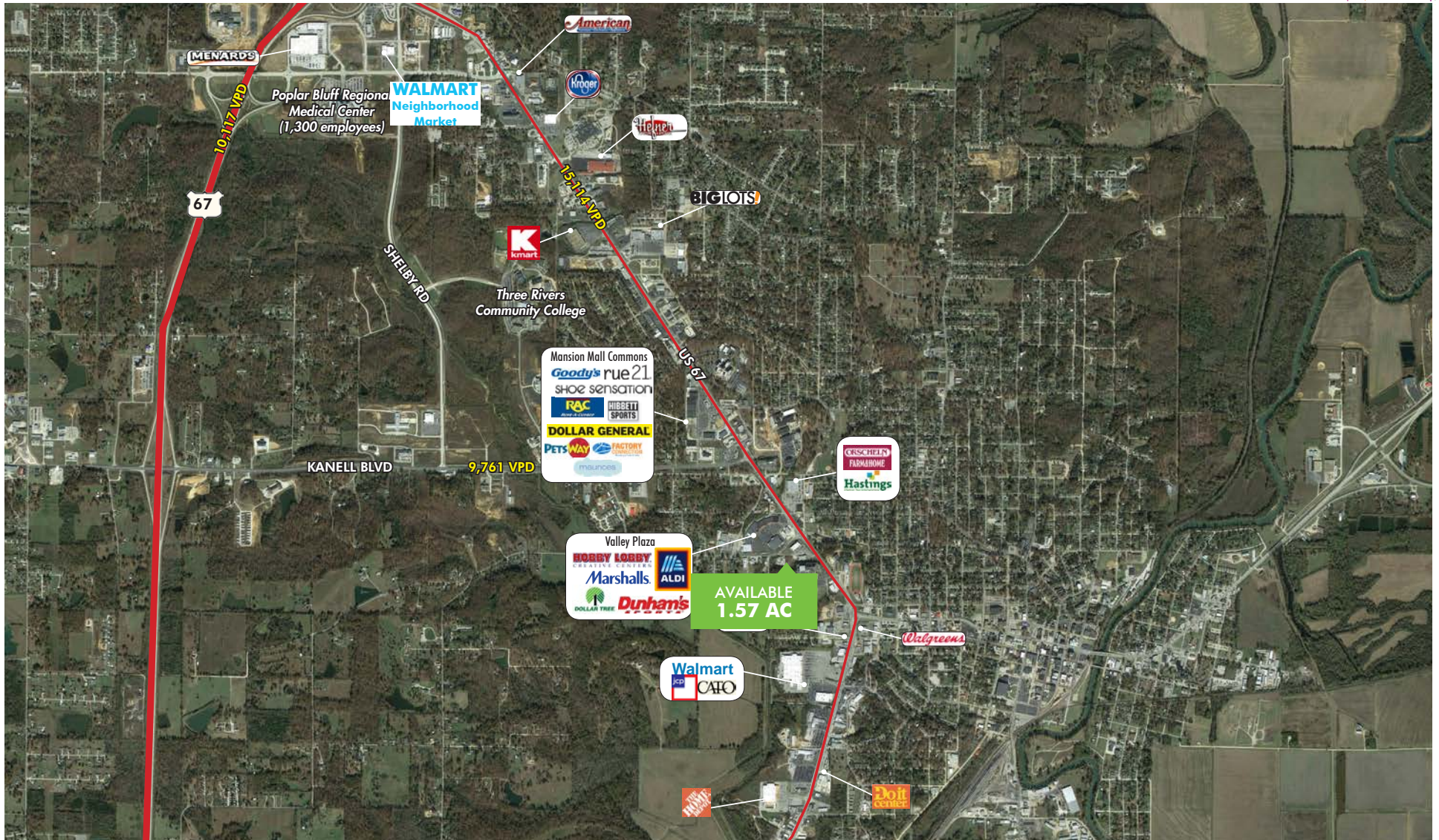
| | 1 MILES | 3 MILES | 5 MILES |
|--------------------------|----------|----------|----------|
| Population | 5,369 | 18,954 | 27,323 |
| Median Household Income | \$34,410 | \$35,388 | \$37,610 |
| Average Household Income | \$43,467 | \$47,095 | \$52,818 |
| Households | 2,334 | 7,942 | 11,243 |

AVAILABLE FOR SALE

TRADE AREA AERIAL

N. WESTWOOD BLVD, POPLAR BLUFF, MO

RETAIL



© 2018 CBRE, Inc. All rights reserved. This information has been obtained from sources believed reliable, but has not been verified for accuracy or completeness. You should conduct a careful, independent investigation of the property and verify all information. Any reliance on this information is solely at your own risk. Photos herein are the property of their respective owners. Use of these images without the express written consent of the owner is prohibited. CBRE and the CBRE logo are service marks of CBRE, Inc. All other marks displayed on this document are the property of their respective owners.

CBRE

AVAILABLE FOR SALE

SITE AERIAL

N. WESTWOOD BLVD, POPLAR BLUFF, MO

RETAIL

